

AN ADDITION TO THE KNOWN CERAMBYCID
FAUNA OF THE REVILLAGEGEDO
ARCHIPELAGO
(Coleoptera)

By E. GORTON LINSLEY
University of California, Berkeley

Through the kindness of Dr. John N. Belkin and Mr. William A. McDonald, Department of Entomology, University of California, Los Angeles, I have had the privilege of examining a small collection of Cerambycidae from Clarion Island, Revillagegedo Archipelago, which were reared from *Sapindus sopolaria* collected on May 7 and 8, 1955. Included were nine specimens of *Nesodes insularis* Linsley, previously reared from *Sophria tomentosa* (Linsley, 1935), and an apparently new species of *Acanthoderes*. This last brings the total for the known species of Cerambycidae for this island group to four.

Acanthoderes peritapnioides Linsley, new species

FEMALE: Form short, robust; integument piceous black, with the antennae, legs, dorsal surface of head, disk of pronotum, an oblique ante-median impression on each elytron, and some of the sterna reddish; surface subglabrous, very finely punctate with scattered coarse punctures, and with irregular dense patches of short, coarse, appressed white hairs at sides of pronotum and in elytral impressions, brushes of white hairs on the tibiae, and scattered short coarse white hairs arising from coarse punctures elsewhere. HEAD finely, densely punctate, a few coarse punctures at middle of face; antennae not attaining elytral apices, surface finely punctate, clothed with fine short appressed pubescence, with scattered, short, somewhat coarse, suberect hairs, scape moderately robust, third segment elongate, segments four to ten gradually decreasing in length, eleventh segment very much shorter than tenth. PRONOTUM transverse, armed at sides with a large conical tubercle, surface very finely punctate, with scattered, superimposed, coarse punctures on disk and toward margins, most numerous on the densely white-pubescent ventro-lateral surface; scutellum finely punctate, glabrous; prosternum shining, finely punctate, punctures denser at sides and on intercoxal process. ELYTRA piceous, with apices and oblique ante-median impressions reddish; surface finely punctate with scattered coarse punctures super-imposed; apices slightly flaring, separately subtruncate. LEGS moderately robust; femora finely punctate, pubescence sparse, fine, obscure, denser toward apex; tibiae finely punctate, densely clothed over apical three-fourths with a dense brush of long erect white hair; tarsi densely and similarly clothed. ABDOMEN finely, densely punctate, thinly clothed with short, obscure pubescence. Length, 11.5 mm.

HOLOTYPE female (Calif. Acad. Sci.), reared from *Sapindus sopolaria*, on Clarion Island, Revillagegedo Group, Mexico, May 7, 1955, by William A. McDonald and D. C. Blodgett.

This species may be distinguished readily from *Acanthoderes socorroensis* Linsley (1942), the only other member of the genus known from the Revillagegedo Islands, by the piceous coloration, subglabrous integument, less robust form, flaring and separately truncate elytral apices, and numerous other features. Superficially the species is suggestive of *Peritapnia fabra* Horn.

LITERATURE CITED

Linsley, E. G.

1935. Cerambycidae from the Revillagegedo Islands, Mexico. Pan-Pacific Ent., 11:72-74, fig.

1942. Cerambycidae of the Revillagegedo Islands, Appendix A, in: Contributions toward a knowledge of the insect fauna of Lower California. No. 2. Coleoptera: Cerambycidae. Proc. Calif. Acad. Sci., (4):21-96, pl. 4-5.

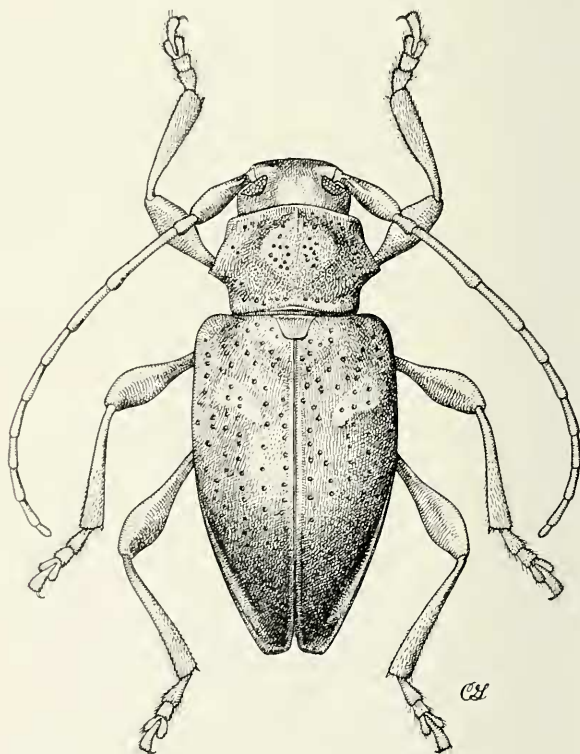


PLATE 16

Acanthoderes peritapnioides Linsley ♀
(Drawing by Celeste Green)